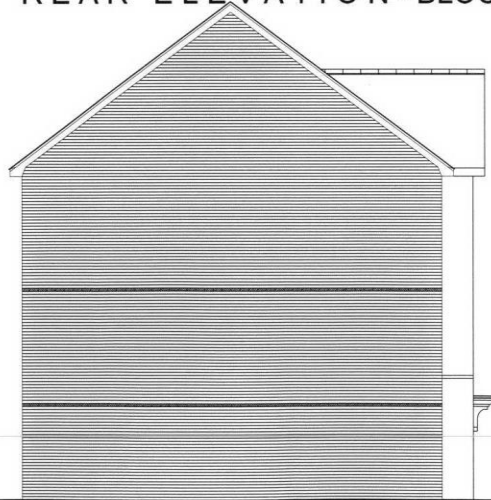


REAR ELEVATION - BLOCKS 2 & 3




SIDE ELEVATION

REV	DATE	DESCRIPTION	BY

07 / 18 91 / --

STOCKTON BOROUGH COUNCIL
PLANNING
20 JUN 2007
DATE RECEIVED

JOB	Millbank Lane, Thornaby	SCALE	1:200	DRAWN	CD	CHKD	RC
TITLE	Block 2 - Proposed Elevations			DATE	07.06.07	DATE	07.06.07
		G2 1200 Century Way, Thorpe Park, Leeds, LS15 5ZA Telephone 0113 2515121 Fax 0113 2515551					

DWG No.
 G2/Thornaby/10
 Rev. /